



Community Food Systems, Maternal Health and Justice

Thursday, March 24, 2022



*2022 NOW Webinar Series
Levers of Change in Action:
Unpacking the NOW Playbook*




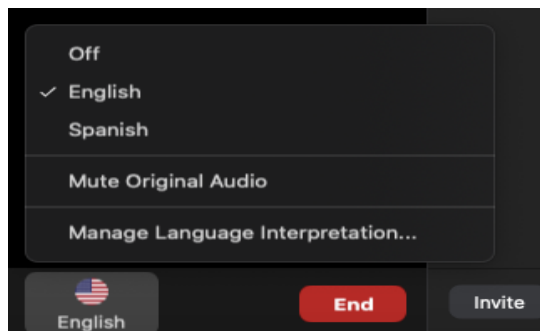


Session Outline

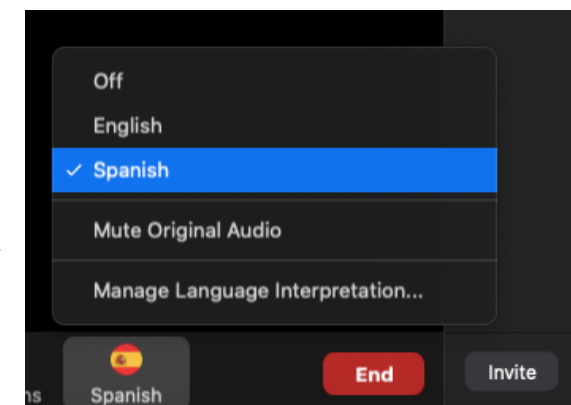
- Welcome & Overview
- About Vital Village
- NOW Playbook
- *Community Food Systems, Maternal Health and Justice*
- Panel Discussion and Audience Q&A
- Closing

Language Justice: Zoom Webinar Interpretación/ Interpretation

1. In your meeting/webinar controls, click  Interpretation.
2. Click the language that you would like to hear.
3. (Optional) To only hear the interpreted language, click Mute Original Audio.



1. En los controles de la reunión o el seminario web, hacer clic en Interpretación.
2. Hacer clic en el idioma que desee escuchar.
3. (Opcional) Para escuchar solo el idioma interpretado, haga clic en Silenciar audio original.

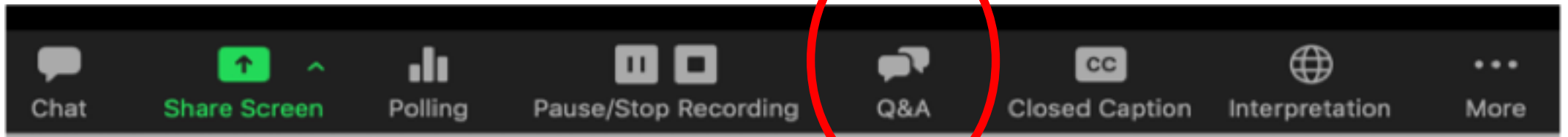


Housekeeping

- Spanish Language Access
 - Community Language Cooperative (CLC) based in Denver, CO
- Slides and recording will be posted on the NOW Forum (<https://www.networksofopportunity.org/Webinar>)
- Submit questions on dashboard
- Use the chat box for comments

Q&A

- Submit your questions by clicking on the Q&A icon at the bottom of your screen



About Vital Village Networks

Vital Village Networks is a national collective of diverse change-makers and organizations committed to pioneering sustainable approaches to transforming child, family, and community wellbeing

Networks of Opportunity for Child Wellbeing (NOW) is a national initiative powered by Vital Village Networks

NOW exists to achieve social transformation and racial justice by partnering with individuals, organizations, institutions, and coalitions across the country to build their capacity to equitably share power with communities that have faced ongoing racial oppression and marginalization.



Guiding Principles

BELONG - Centered in dignity and equity



LEARN - Those closest to the challenge
are closest to the solution



ENGAGE - Design with, not for, users



TRANSFORM - Identify and frame
challenges to address collectively

NOW Innovation Forum - Sign up to engage with a network of community leaders



<https://www.networksofopportunity.org/>

NOW Playbook: Transformative Community Capacity to Advance Equity



<https://www.networksofopportunity.org/now-playbook>

Levers of Community Change

Levers of Community Change

Community and systems transformation start from the ground up. The strengths, assets, and wisdom of those most impacted by structural inequities are the cornerstone of sustainable solutions that ultimately create healthy, thriving communities of opportunity for all children.

As community networks, grassroots coalitions, and parent-led campaigns mobilize to address inequities in early care and education — and to expand access to health care, resources, and opportunities to achieve educational and economic wellbeing — wisdom from both research and practice are revealing important common threads that help facilitate successful and impactful initiatives.

Levers of Community Change
In 2016, NOW convened a diverse, cross-sector group including parents, caregivers, advocates, educators, practitioners, and other stakeholders, with an ambitious goal: to co-design a robust community capacity-building infrastructure to support community efforts to advance equity and achieve optimal child and family wellbeing by transforming and aligning systems of care and education in early childhood, using a trauma-informed and equity-focused lens.

Drawing upon the lessons learned from Vital Village Networks' history of community engagement and empowerment in Boston, this strategic planning process yielded a theory of action that established the foundation for the NOW initiative and its framework for building local community capacity. **Five key levers of community change** emerged from the NOW theory of action as critical domains of action and collaboration that can drive equitable and inclusive systems alignment and transformation — moving those most impacted by inequity from the margins to the center. These levers of community change foster equitable leadership through strategies that uphold and honor dignity.

FIVE KEY LEVERS OF COMMUNITY CHANGE

Lever 1
Center Racial Equity and Healing

Lever 2
Implement Shared Governance

Lever 3
Engage Communities Authentically and with Dignity

Lever 4
Tell Data Stories

Lever 5
Plan for Sustainability

[Learn More about NOW strategic planning process on the NOW Innovation Forum](https://www.nowearlycare.org/research)
<https://www.nowearlycare.org/research>



Stories, Strategies, and Tools

Lever 1: Center Racial Equity and Healing

Stories in Action: Centering Racial Equity and Healing

Voices and Choices for Children Coalition (Twin Cities, Minnesota). This coalition explicitly names racial equity in its mission statement: “to build capacity and amplify the voices of communities of color and American Indian communities to ensure they have an impact on public policy and practice and remove systemic barriers in order to create the conditions in which racial and social justice thrive.” The coalition works collaboratively to develop strongly engaged cultural communities of learning, organizing, and advocacy for their input, and impact in shaping more equitable practices and policies that will support better outcomes, specifically for children of color and American Indian children prenatal to 8 years old across the state.

Berkeley Early Care and Education (BEE) Collective (Berkeley County, South Carolina). BEE Collective was developed to address discriminatory exclusion and expulsion rates in early learning settings, disproportionately affecting Black boys, in their community and across the state. The Collective focuses on the impact of implicit racial bias in the early education system and works with community leaders to develop solutions. They use community and public data to raise attention to this equity issue and have developed a multi-pronged approach to address it at the community and state level. Locally, they offer mental health, inclusion, and curriculum support to centers serving students of color, who are disproportionately impacted by expulsion. They also engage in state-level advocacy to better support parents and teachers and invest in training to reduce implicit racial bias in the maternal health and education system and to build capacity for equitable treatment of children and families.



and align around this collective

including edu

care, and business -

from across

ership in a

The EC

educati

formed a

Newark a ti

lished the goal

collaborative approach,

periences and trauma. Using a

that are responsive to adverse

building early education and c

The ECCYC health committee focuses on

Essex County Council for Young Children (ECCYC, Newark, New Jersey).

Lever 1: Center Racial Equity and Healing

Village Strategies

Name racism as a root cause of health, economic, and social inequities. Understanding and recognizing the levels of racism (internal, interpersonal, and institutional) and learning about the historical forces that have driven its current form is crucial to identify strategies to dismantle it. Dr. Camara Phyllis Jones’s “A Gardener’s Tale” provides a framework for understanding and recognizing various levels of racism and its impact on health and wellbeing.[2] A first step to addressing structural racism is to acknowledge that it exists, and that, as a system, it perpetuates and reinforces other levels of racism.



focus your effort

practic

ity an

zation,

examini

and yo

reflection i

or separate sic

alignment efforts, and i

health, and education sys

into all early childhood ec

Commit to eliminat

racism and achiev

as a central — not se

of your work.

Lever 1: Center Racial Equity and Healing

Tools

Racial Equity Action Plans: A How-to Manual (Government Alliance on Race and Equity). Racial equity action plans can put a theory of change into action to drive institutional and structural change and achieve a collective vision of racial equity. This manual provides guidance for local governments to develop their own racial equity action plans after a period of research and information gathering, including advice and tools for conducting this research.

A Practitioner’s Guide for Advancing Health Equity (Center for Disease Control and Prevention). This comprehensive tool provides lessons learned and innovative ideas on how to maximize the effects of policy, systems, and environmental improvement strategies — all with the goal of reducing health disparities and advancing health equity.

The Working Principles for Health Justice & Racial Equity Organizational Self-Assessment (The Praxis Project). This tool supports organizations or programs to reflect on the ways in which they embody health justice and racial equity in practice, and identify opportunities for growth and improvement. Included are five working principles, and what each principle encompasses.

Early Childhood System Performance Assessment Toolkit: Advancing Parent Engagement & Equity Items (Center for the Study of Social Policy; CSSP). This set of tools helps groups measure various aspects of how well your local early childhood system is working, including key equity metrics.

Resources

Manifesto for Race Equity & Parent Leadership in Early Childhood Systems (Center for the Study of Social Policy). A group of 40 parent leaders and agency staff from nine Early Childhood Learning and Innovation Network for Communities (EC-LINC) communities, with support from CSSP staff and consultants, came together to create this Manifesto for Race Equity and Parent Leadership in Early Childhood.

Equity Manifesto (PolicyLink). The Equity Manifesto has been inspired by the work, commitments, insights, and resolve of the many partners with whom PolicyLink has shared the journey of advancing racial and economic equity.

Featured Speakers



Tonni Oberly, MPH, CHES, CLC
*Research Scholar,
National Birth Equity Collaborative*



India Hinton, MS, CNS, LDN
Maternal and Child Health Advocate

Reflective Action Guide



NOW 2022 Webinar Series

INSTRUCTIONS: Please download this document and take a few minutes to write some initial responses to the following questions

What resonated with you most from today's webinar?	
Which lever of change are you feeling compelled to focus attention on in your work?	
How are you thinking about children, families, and communities in your work differently?	
What 2-3 action steps might you take over the next two months to better uplift and honor the dignity of children, families, and community?	



Tonni Oberly, MPH, CHES, CLC
Research Scholar,
National Birth Equity Collaborative

The background features several abstract blue watercolor-style shapes. In the top left, there are two overlapping, soft-edged shapes. On the right side, there are several thin, curved, parallel lines that resemble a stylized wave or a ribbon. In the bottom left corner, there is a cluster of small, dark blue dots of varying sizes, some with faint trails, suggesting movement or a starburst effect.

The Intersection of Food and Reproductive Justice

Tonni Oberly, MPH, CHES, CLC
National Birth Equity Collaborative (NBEC)

Introduction



Definitions

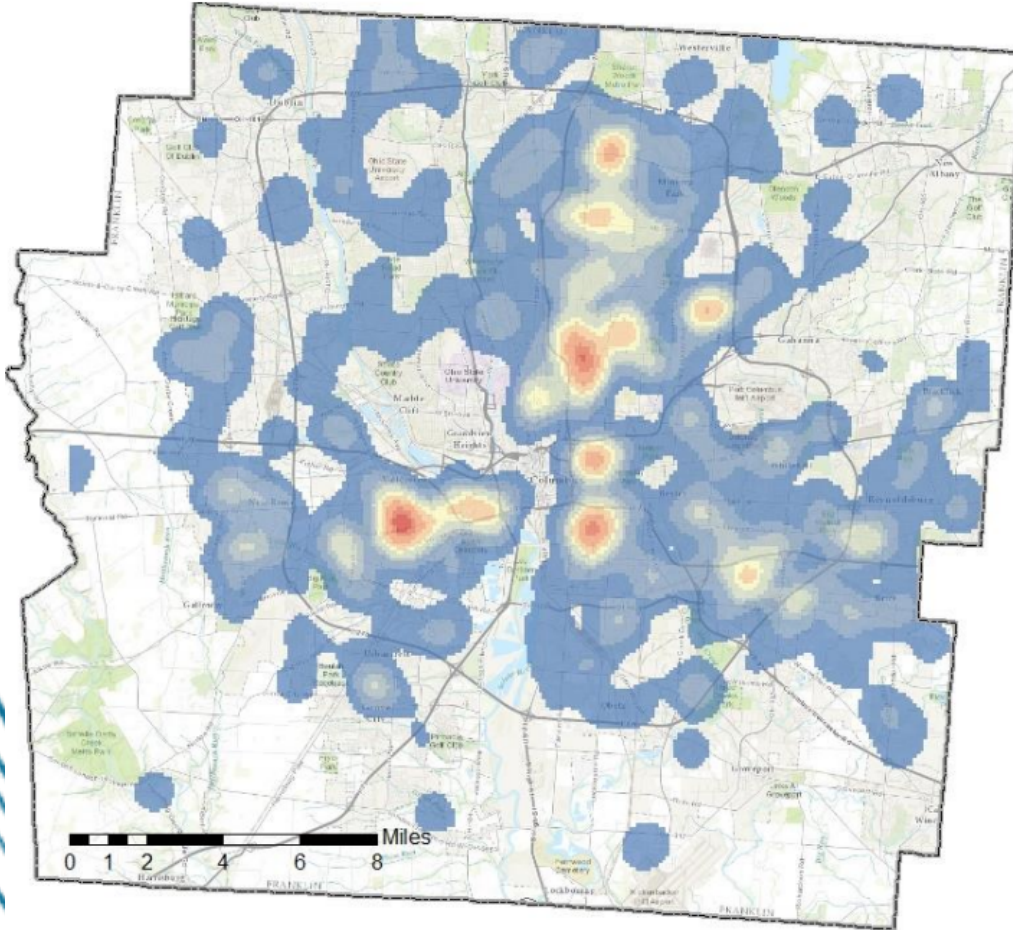
- Reproductive Justice is the **human right** to maintain personal bodily autonomy, have children, not have children, and parent the children we have in safe and sustainable communities (SisterSong)
- Food justice is a holistic and structural view of the food system that sees healthy food as a **human right** and addresses structural barriers to that right (FoodPrint)

Drawing Connections

- Leading causes of maternal mortality and morbidity are often driven by the increasing number of pregnant people with chronic diseases
 - Hypertension, diabetes, heart disease
 - Iron-deficient anemia
- Most health outcomes are not determined by healthcare
- Need to think systematically not individual level

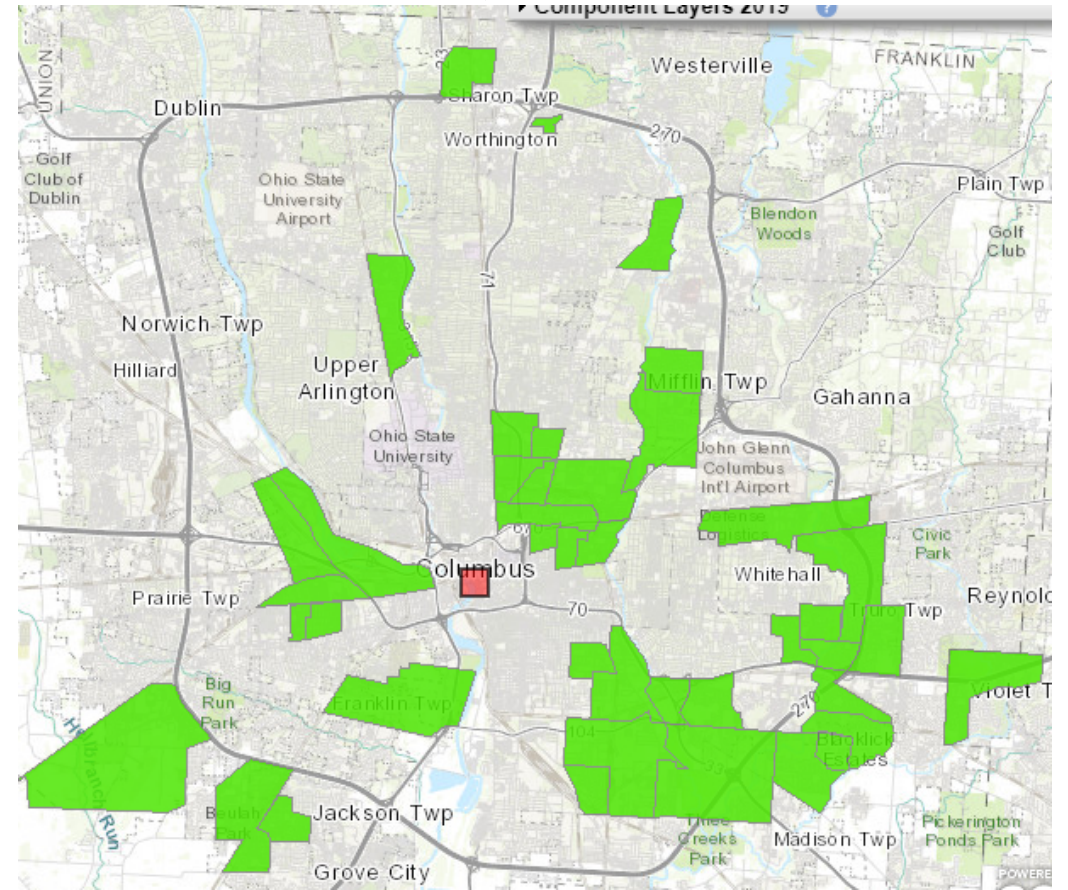
Place-Based Issues

Franklin County, Ohio Infant Deaths, 2007-2011



(Kirwan Institute, 2014)

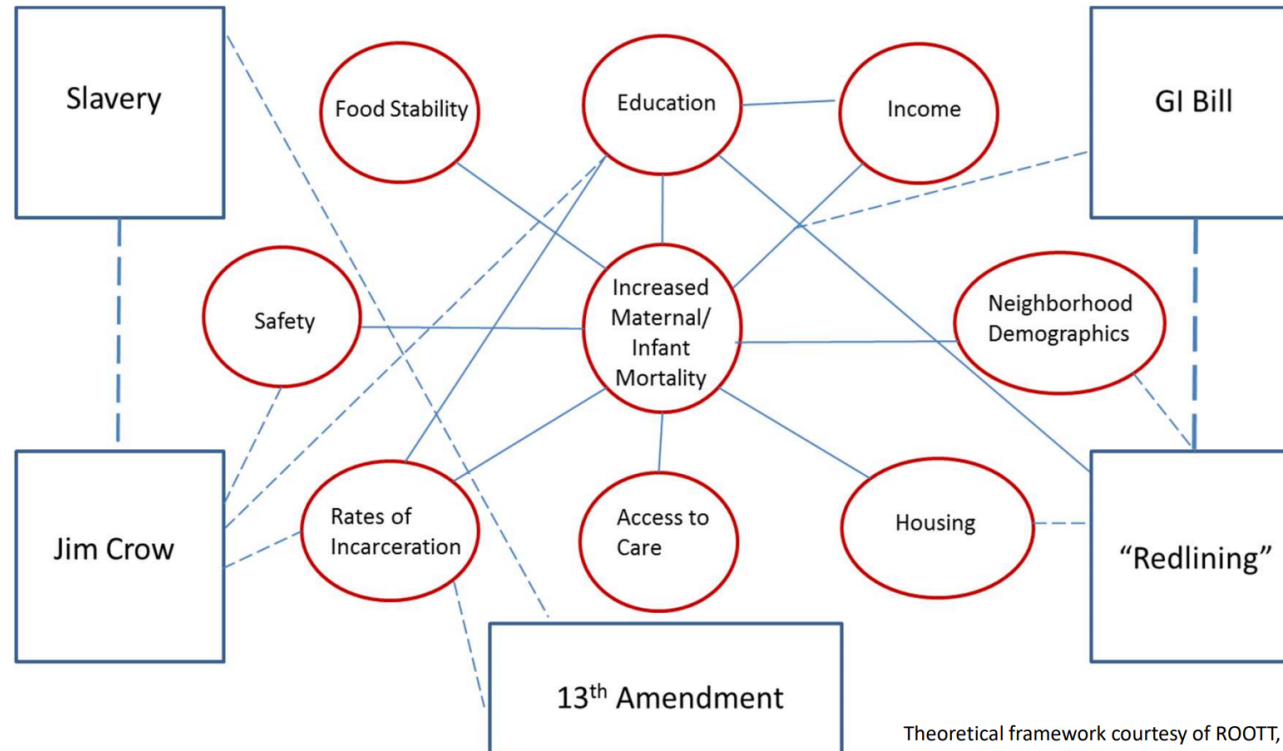
Low-income and Low food access areas, 2019



(USDA, 2019)

WEB OF CAUSATION

STRUCTURAL and SOCIAL DETERMINANTS: IMPACT ON HEALTH



Theoretical framework courtesy of ROOTT, 2016. retrieved from www.roottrj.org

Moving Forward: National Disaster Recovery Framework

Planning



- Critical Sankofa Planning
- Trauma-informed Planning

Public Information & Warning



- Culturally humble communication

Operational Coordination



- Community organizing
- Collective Impact Model

Economic Recovery



- Reparations
- Proper home valuation in Black neighborhoods

Moving Forward: National Disaster Recovery Framework

Health and Social Services



- Universal healthcare
- Police reform
- Education reform

Housing



- Home ownership
- Community land trust
- Housing quality

Infrastructure



- Transportation access
- Clean water
- Food justice

Natural & Cultural Resources



- Environmental justice
- Placemaking
- Historic Preservation

The background features several decorative elements in shades of blue. On the left, there is a large, vertical, textured brushstroke that tapers towards the bottom, surrounded by numerous small, dark blue splatters of varying sizes. At the top right, there are several parallel, slightly curved lines that resemble a fine brushstroke or a series of thin, overlapping strokes. In the bottom right corner, there are two overlapping, soft-edged, light blue shapes that look like watercolor washes or soft brushstrokes.

Beloved Community

The background features several decorative elements in shades of blue. On the left, there is a large, vertical, textured brushstroke that tapers towards the bottom, with numerous small, dark blue splatters scattered around its base. At the top right, there are several parallel, slightly curved lines that resemble a fine brushstroke or a series of thin, overlapping strokes. In the bottom right corner, there are two overlapping, soft-edged, light blue shapes that look like watercolor washes or ink blots.

Questions
or
comments?

References

Reece, J. & Norris, D. (2014). Place & Infant Health: “Hot Spot” and Asset Mapping for Infant and Maternal Health in Franklin County. Kirwan Institute for the Study of Race and Ethnicity

Reproductive Justice. (n.d.). Sister Song. Retrieved March 23, 2022, from <https://www.sistersong.net/reproductive-justice>

Food Justice. (2021). FoodPrint. Retrieved March 23, 2022, from <https://foodprint.org/issues/food-justice/>

Oberly, T. & Davis, K. (2021). *Food Justice is a Black Maternal Health Imperative*. Coalition Equity. <https://www.coalitionequity.org//post/food-justice-is-a-black-maternal-health-imperative>

Thanks!

Tonni Oberly, MPH, CHES, CLC
toberly@birthequity.org
National Birth Equity Collaborative



CREDITS: This presentation template was created by **Slidesgo**, including icons by **Flaticon** and infographics & images by **Freepik**.



India Hinton, MS, CNS, LDN

*Maternal and Child Health
Advocate*





**LEVERS OF COMMUNITY CHANGE IN ACTION:
COMMUNITY FOOD SYSTEMS, MATERNAL
HEALTH, AND JUSTICE**

March 24, 2022

India Hinton, MS, CNS, LDN

Maternal and Child Health Advocate

TREE OF CHANGE



Racial
Equity

Generational Wealth

HEALTHY INDIVIDUALS

Improved Child Outcomes

Improved
Mental Health

Lower ACE's

Healthy Families

Improved Maternal Health Outcomes

Positive Relationships

SUSTAINABLE FOOD SYSTEMS

HEALTHY COMMUNITIES

Spiritual Wellness

Improve Access

Center Community Voices

Address Trauma

SYSTEMS CHANGE

Equitable Food Systems

Eradicate Racism

Dismantle Inequities

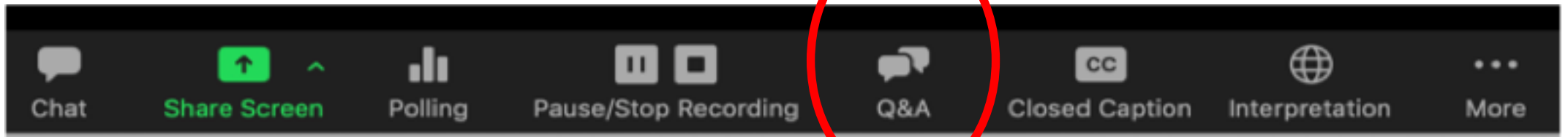
Center Black Voices

Q & A

Question and Answer

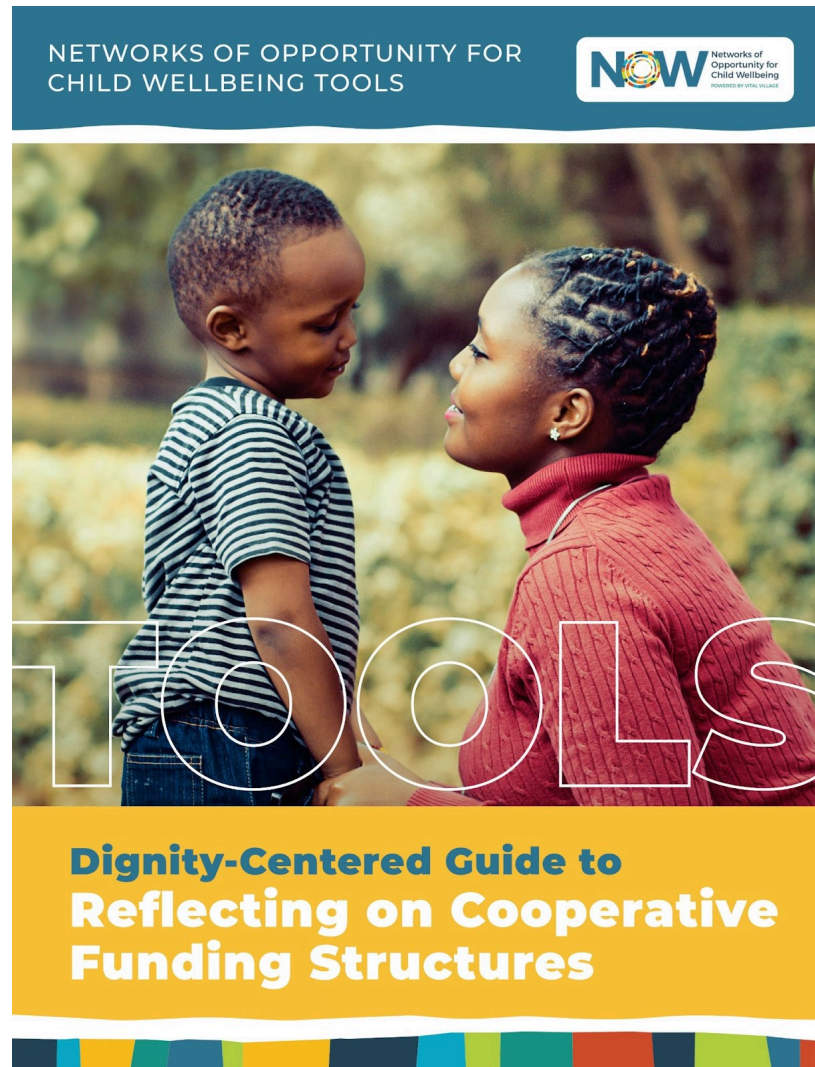
Q&A

- Submit your questions by clicking on the Q&A icon at the bottom of your screen



Coming Soon

**New Resource:
*A Dignity-Centered Guide to
Reflecting on Cooperative
Funding Structures***



<https://www.networksofopportunity.org/coop-reflection-guide>

SAVE THE DATE!

**2022 National Community
Leadership Summit
October 18-19, 2022**





Thank You!

<https://www.networksofopportunity.org/>

projecthope.csc@gmail.com

Follow us on Twitter:

@NOW_WellChild

@Vital_Village



Vital Village Networks at Boston Medical Center
801 Albany Street, 2-N, Boston, MA 02119
617.414.3674
www.vitalvillage.org